



*Fisher House Foundation*

*"Because a Family's Love is Good Medicine"*



# Thank You





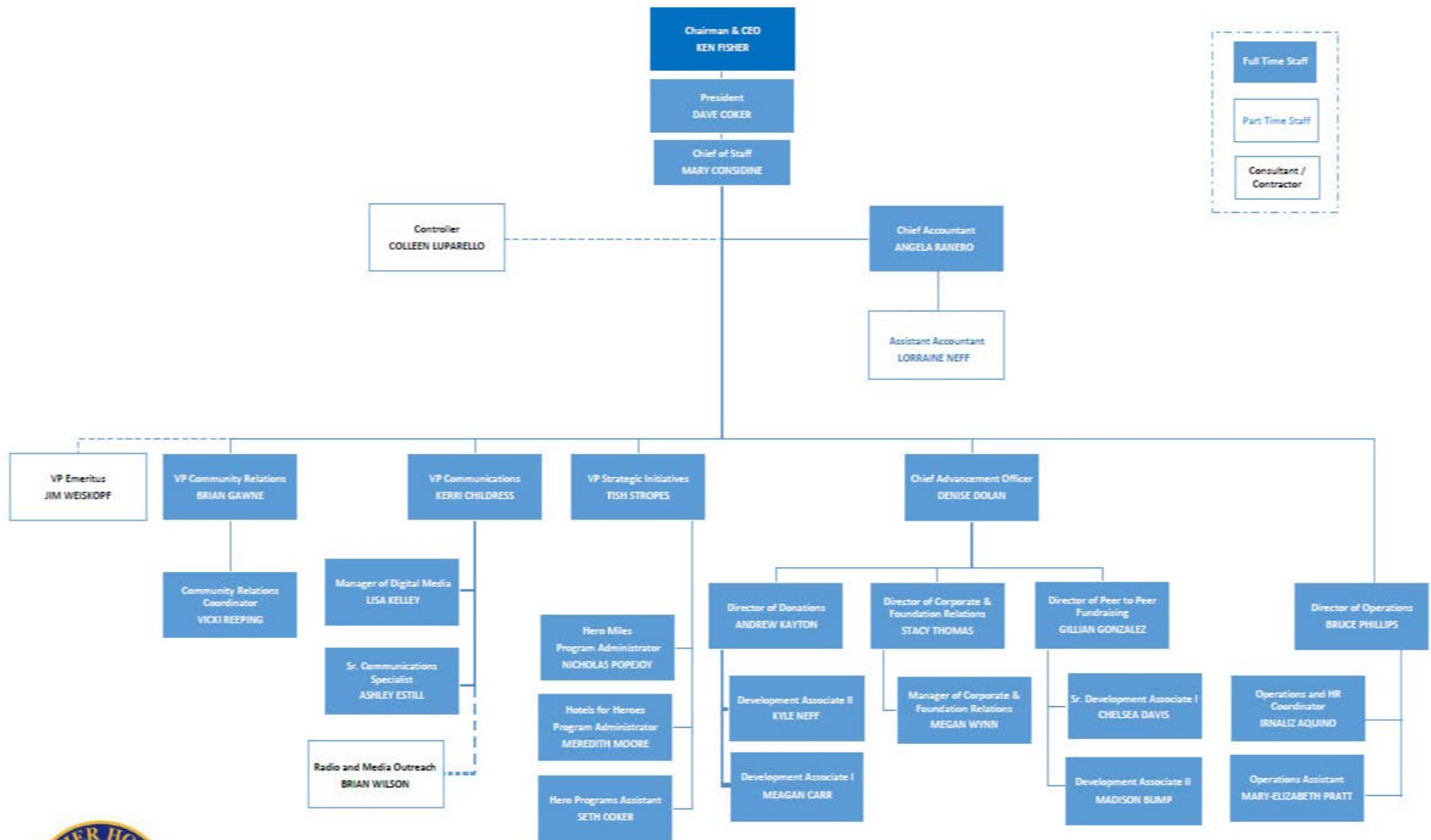
The top of the image features a close-up of the American flag, showing the stars and stripes. The stars are white on a blue field, and the stripes are red and white. The flag appears to be waving.

# *Introductions*





# The Fisher House Foundation Staff Organizational Chart





# *Fundraising Models*



KEYSTONE  
POLICY CENTER



UNITED NATIONS  
FOUNDATION

Connecting you with the United Nations



BOY SCOUTS  
OF AMERICA®





# *Events Discussion*

## **Sample FOFH Events**

- Emerald Coast – Gala
- FH Wisconsin & Gainesville  
FH – Golf Tournaments
- FH Michigan – Vets on the Hill
- Rocky Mountain FHF –  
Upcoming Gala

## **FHF Assistance**

- Peer-to-Peer fundraising
  - Event websites
- Team Fisher House
- Golf Kits for Tournaments  
benefitting FOFH groups
- POC: Gillian Gonzalez  
[ggonzalez@fisherhouse.org](mailto:ggonzalez@fisherhouse.org)





# *Grants Discussion*

FHF staff can provide assistance for FOFH groups applying for grants

- FHF POC: Megan Wynn  
mwynn@fisehrhouse.org
- Can review FOFH grant submissions
- Can provide assistance with verbiage and FHF statistics







# *Transitions*

Discussion of group experiences as they transitioned from the Capital Campaign prior to opening – to the sustainment phase after their Fisher House was dedicated





The top of the image features a close-up of the American flag, showing the stars and stripes. The stars are white on a blue field, and the stripes are red and white. The flag is slightly blurred, giving it a sense of movement or depth.

*How May We Assist?*





The top of the image features a close-up of the American flag, showing the stars and stripes. The rest of the background is a solid blue gradient.

*Thank you*

